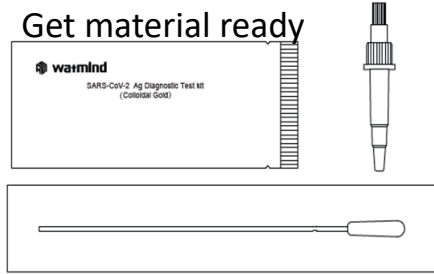


Brief COVID19 Rapid Test Instructions (Saliva Test)

Step 1: Preparation

- Do the test **before eating anything or brushing your teeth**
- Wash hands
- Get material ready

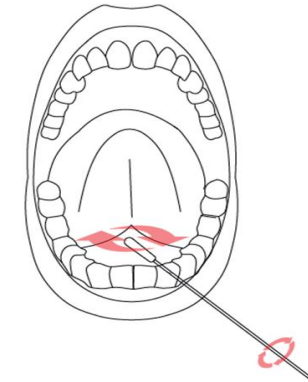


Step 2: Get material ready

- Remove test kit from packaging
- Get tube with buffer solution and nozzle cap ready
- Remove swab from the package
- **Collect saliva** (move tongue inside the mouth)

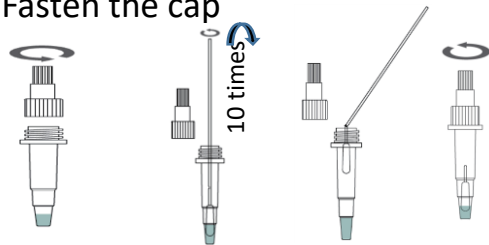
Step 3: Place the swab under the tongue

- Place the swab under the tongue
- Rotate swab 5 times (ca. 10 sec.) until it is completely wet



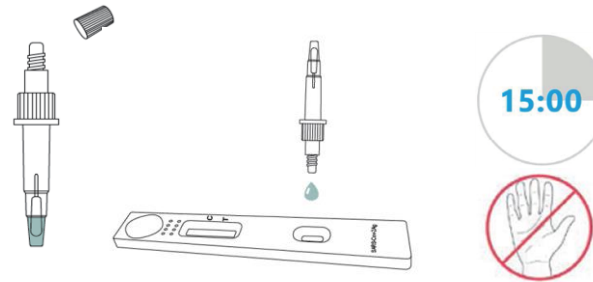
Step 4: Swab into tube

- Unscrew lower (large) cap of the tube
- Put the swab into the solution
- Rotate the swab ca. 10 times against the side of the tube
- Squeeze the tube 5 times
- **Bend the head of the swab** and leave it in the tube
- Fasten the cap



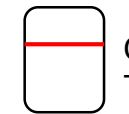
Step 5: Drop onto test strip

- Shake the tube 5-6 times
- Open the (small) cap of the tube
- Apply **3 drops** into the well of the test kit
- Wait for **15 min.**, do not move the test kit

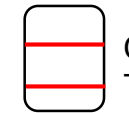


Step 6: Interpret result

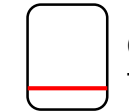
C=Control line
T=Test line



Test is **negative** = No indication of an infection with SARS-CoV2



Test is **positive** = Infection with SARS-CoV2



Test is **invalid** = Repetition immediately required

Please dispose of all materials in the waste bins and then disinfect or wash hands!