



## Instructions for SARS-CoV-2 Rapid Test by the company Watmind (so-called saliva or lolly test) for children in day care

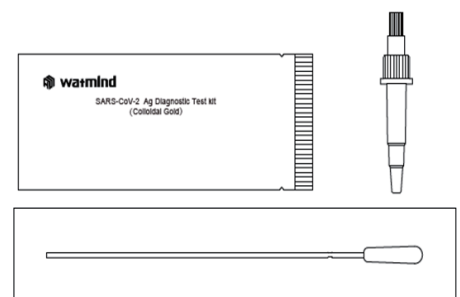
The rapid tests described below that are done as a self-test shall help to detect infections among children in day care at an early stage and thus minimise the transmission of diseases within the children's group. However, rapid tests are not perfect since not all persons are actually detected. Therefore, it is mandatory to further observe the applicable distancing and hygiene regulations. Moreover, not every test person with a positive rapid test is actually infected. This is why every positive rapid test finding has to be verified by a more accurate PCR test.

We recommend doing the test after getting up, before eating and brushing teeth. A swab is placed under the tongue to do the saliva test. Swab and evaluation can be carried out by the parents according to these instructions. To do this, please follow the steps as described:

### Step 1: Preparations

Perform the swab at a clean location.

- ✓ Check the test kit for completeness and get the material ready (tube with buffer solution and cap, swab and test device)
- ✓ Open the packaging of the test device and place it before you.
- ✓ Ask your child to collect **as much saliva as possible** inside the mouth (by moving the tongue and mouth)

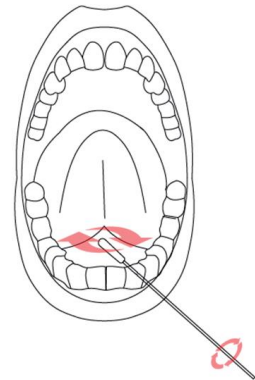




## Instructions for SARS-CoV-2 Rapid Test by the company Watmind (so-called saliva or lolly test) for children in day care

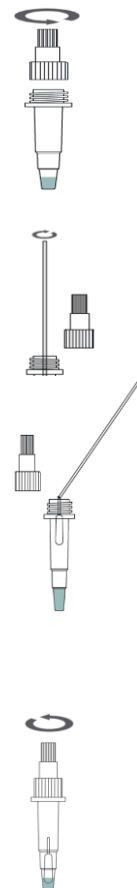
### Step 2: Take swab

- ✓ Open the packaging of the stick with the swab at the grip end and remove it from the package without touching the head of the swab.
- ✓ Place the swab for 10 seconds **under the tongue** of your child and rotate it for 5 times until it is entirely wet



### Step 3: Sampling

- ✓ Open the lower (large) cap of the tube filled with the buffer solution.
- ✓ Insert the swab into the sampling tube and dip the head of the swab completely into the solution.
- ✓ Mix the solution by rotating the swab against the side of the tube for ca. 10 times and squeeze the tube manually 5 times.
- ✓ Bend the head of the swab and leave it in the tube.
- ✓ Fasten the cap of the tube and shake the tube 5-6 times.

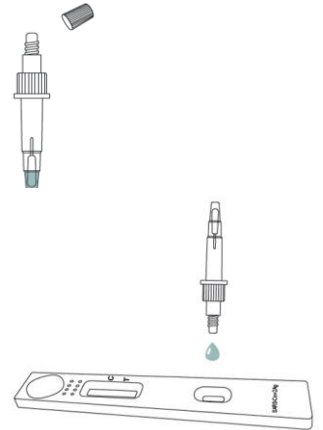




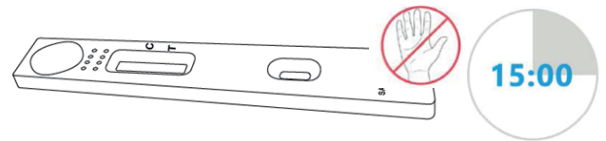
## Instructions for SARS-CoV-2 Rapid Test by the company Watmind (so-called saliva or lolly test) for children in day care

### Step 5: Test procedure

- ✓ Open the upper (small) cap of the tube.
- ✓ Apply **3 drops** of the sample to the specimen well of the test device. Close the upper cap of the tube.



- ✓ Wait for 15 minutes. NOTE: The test device must not be moved or touched during this time.

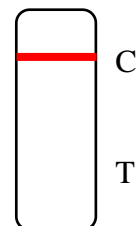


### Step 6: Interpret results

- ✓ After 15 to 20 minutes the result can be read directly (**C**=Control line, **T**=Test line).

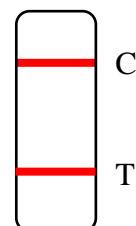
Line **only** with C:

- Test is **negative**,
- Caution: Infection cannot be excluded for sure
- In case of COVID 19 symptoms, visiting the care facility is prohibited.



Line with C **and** T:

- Test is **positive**,
- Take further steps, see below





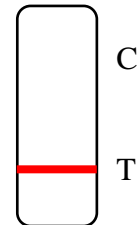
## Instructions for SARS-CoV-2 Rapid Test by the company Watmind (so-called saliva or lolly test) for children in day care

Line **only** with T:

- Test is **invalid** and has to be repeated

**No lines:**

- Test is **invalid** and has to be repeated



Put the entire test material into a plastic bag that is disposed of closed with residual waste. Wash your hands or disinfect them, ventilate the room and clean the pad with a disinfecting tissue.

### **Procedure in case of a positive test result:**

- The parents immediately inform the child minder who then immediately informs his/her representative. The representative immediately reports the finding of the rapid test to the public health department of the State Capital Stuttgart by means of the test certificate (by fax: **0711 216 9510328**). The test certificate is available at: <https://coronavirus.stuttgart.de/item/show/708670/>. The parents are provided with a copy of the test certificate.
- It is urgently recommended that the affected child and direct household contacts remain in domestic isolation or quarantine.
- To verify the positive rapid test result, the parents shall arrange immediately for a (free) PCR test.

### **Where can the PCR test be done?**

Contact your paediatrician or a Corona medical practice

(<https://www.kvbawue.de/index.php?id=1102>). You can also make an appointment in the test centre Cannstatter Wasen (<https://corona-testzentrum-wasen.de/>) stating “PCR test in case of a positive antigen rapid test”, in the fever outpatient department in the Corona medical practice Dr. Roll und Kollegen, Schwabstraße 26, 70197



## Instructions for SARS-CoV-2 Rapid Test by the company Watmind (so-called saliva or lolly test) for children in day care

Stuttgart (<https://www.fieberambulanz-stuttgart.de/home.html>) or go to the fever  
outpatient department of

Klinikum Stuttgart, Kriegsbergstr. 60, 70174 Stuttgart, without an appointment  
(<https://www.klinikum-stuttgart.de/aktuell-im-klinikum/presse/infoseite-corona-virus/fieber-ambulanz>).

A **negative PCR test** overrides the positive rapid test. In the event of a **positive PCR test** the Public Health Department arranges the corresponding isolation measures.